

The New Pittsburgh International Airport

Building Momentum for 2025

June 2024

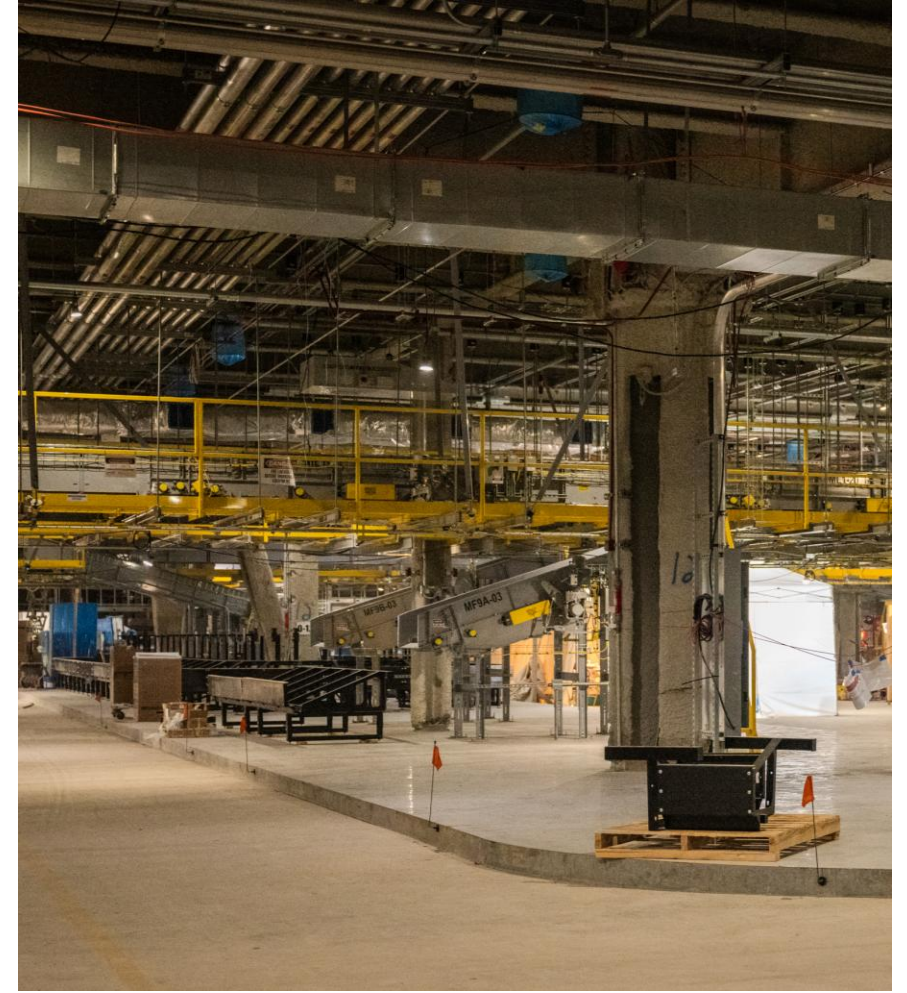


ALLEGHENY COUNTY AIRPORT AUTHORITY
PITTSBURGH INTERNATIONAL AIRPORT
ALLEGHENY COUNTY AIRPORT



More and more milestones are being reached, as new airport construction surpasses 68% completion

- Baggage System Installation Continues
- Parking Garage Bridge, MSE Wall Completion
- Escalator and Elevator Installation
- Parking Garage Ramp Column Completion
- Med. Voltage Primary Switchgear Setting
- Departures Level Low Roof Fireproofing
- Departures Level High Ceiling Installation



Our new airport terminal's roof will soon be dried-in, with green terraces waterproofed shortly thereafter



Parking garage structural concrete and ramp work continues, on-schedule for completion early this summer

- South Exit Speed Ramp Column and Form Work Recently Reached 100% Completion
- Traffic Coating, One of the Last Remaining Garage Elements, Commenced Last Week
- Concrete Topping Slab Placement Currently 95% Completed
- Commercial Parking Lot Construction Currently 59% Completed



Final completion of new airport roadways will have surpassed 98% with 100% completion expected later this summer

- Approach on Current Roadways Recently Altered to Facilitate Completion
- Bridge 4 of the Exit Roadways Recently Installed, Currently Pouring Concrete
- Parapet Wall Installation
- Bollard Installation
- Roadway Concrete Near Completion



As construction continues toward opening day, the next few months will yield even more significant milestones

- New Terminal Power Fully Connected
- Customer Service Building Structural Steel Completion
- Escalator Installation
- Freight Elevator Installation
- Secondary Electrical System Activation
- Mechanical Systems Activation Start
- Customs Baggage System Completed





We are doing more than building a new airport

14,300 total jobs

\$2.5B in economic impact

No local or state tax dollars used

90% of materials and services sourced locally