



Allegheny County Airport Authority



Air Service

December 19, 2025

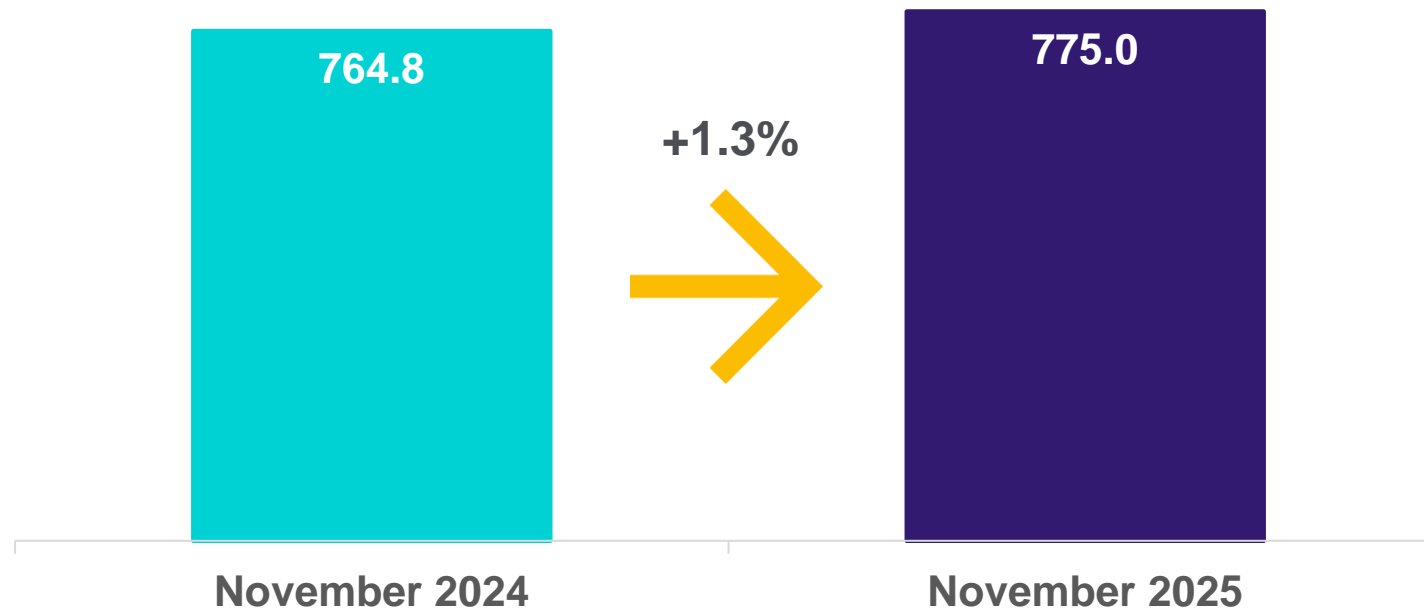
For the first time ever, PIT will be connected with Dublin beginning May 2026

- Aer Lingus will be the third European airline at PIT
- Flights commence on May 25, 2026, with four flights per week
- Aer Lingus will utilize the Airbus A321LR for PIT, which features 184 seats, including 16 lie-flat business class seats



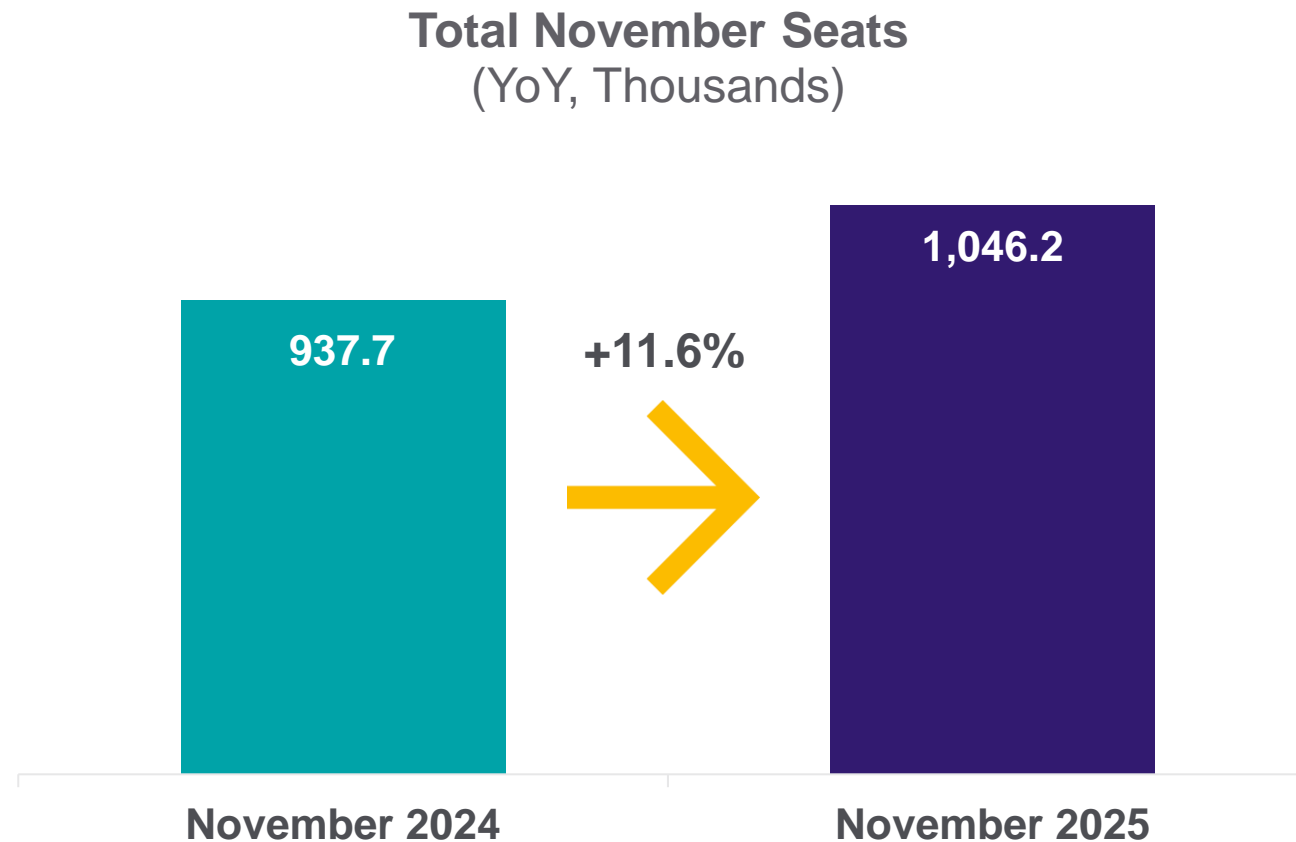
Passenger traffic rose in November despite significant headwinds

Total November Passengers
(YoY, Thousands)



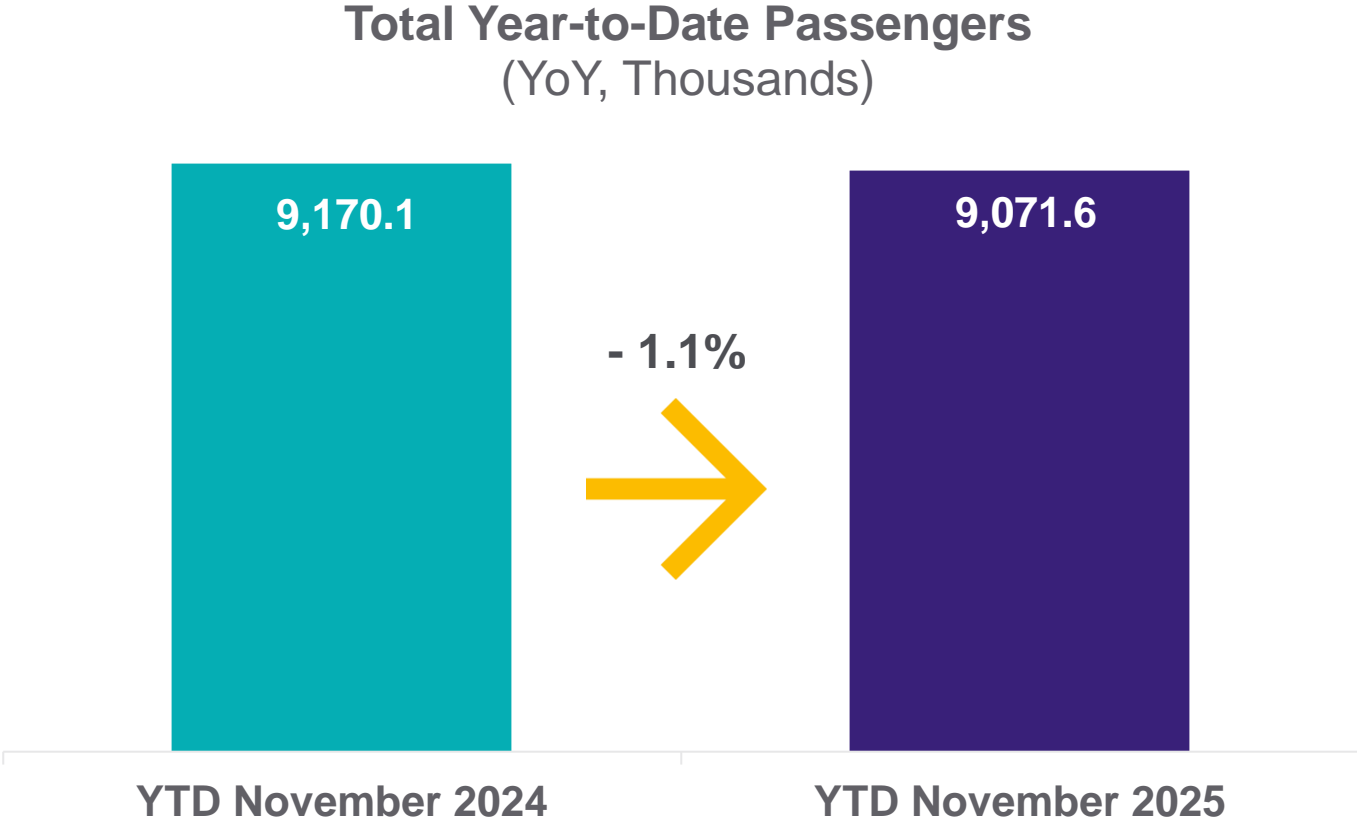
Source: Allegheny County Airport Authority

Airlines significantly increased capacity at PIT in November to meet Thanksgiving travel demand



Source: Cirium Diio Mi

PIT has served over 9 million passengers year-to-date, reflecting a 1.1% decrease



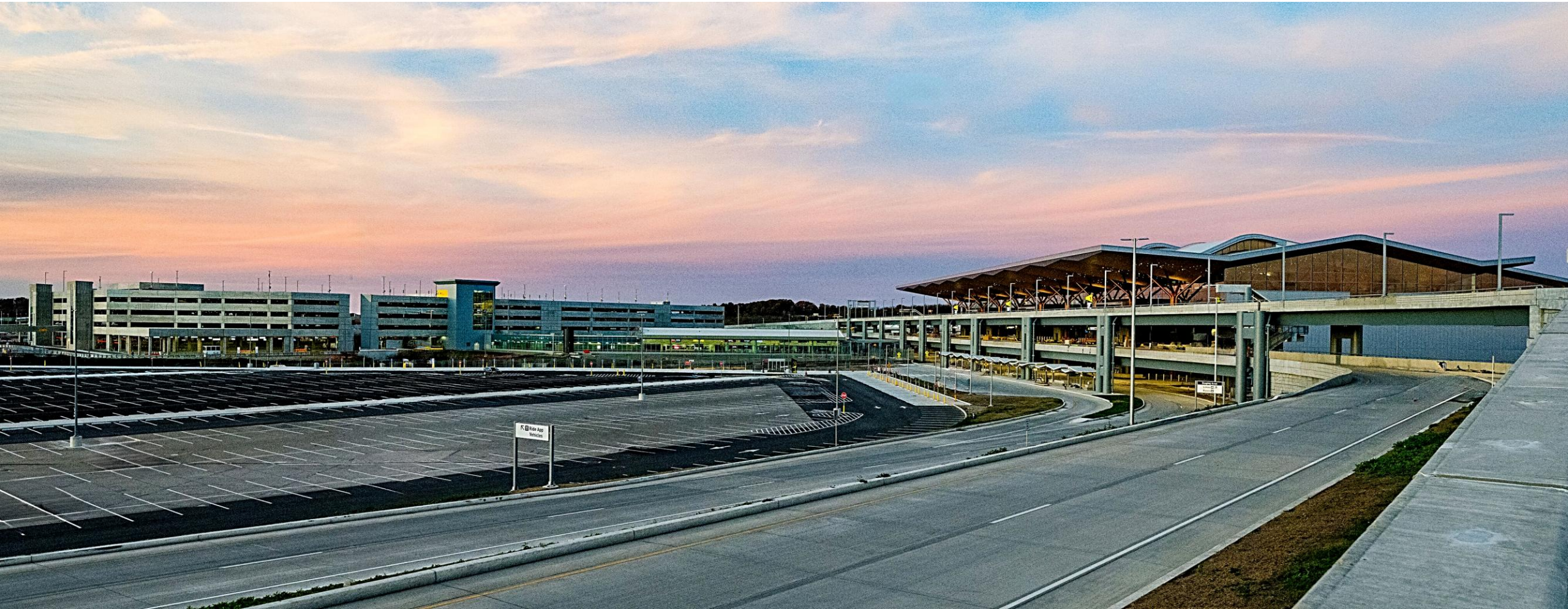
Source: Allegheny County Airport Authority



Continuing the Journey

December 19, 2025

In 2025, we realized a pivotal moment in our region's history

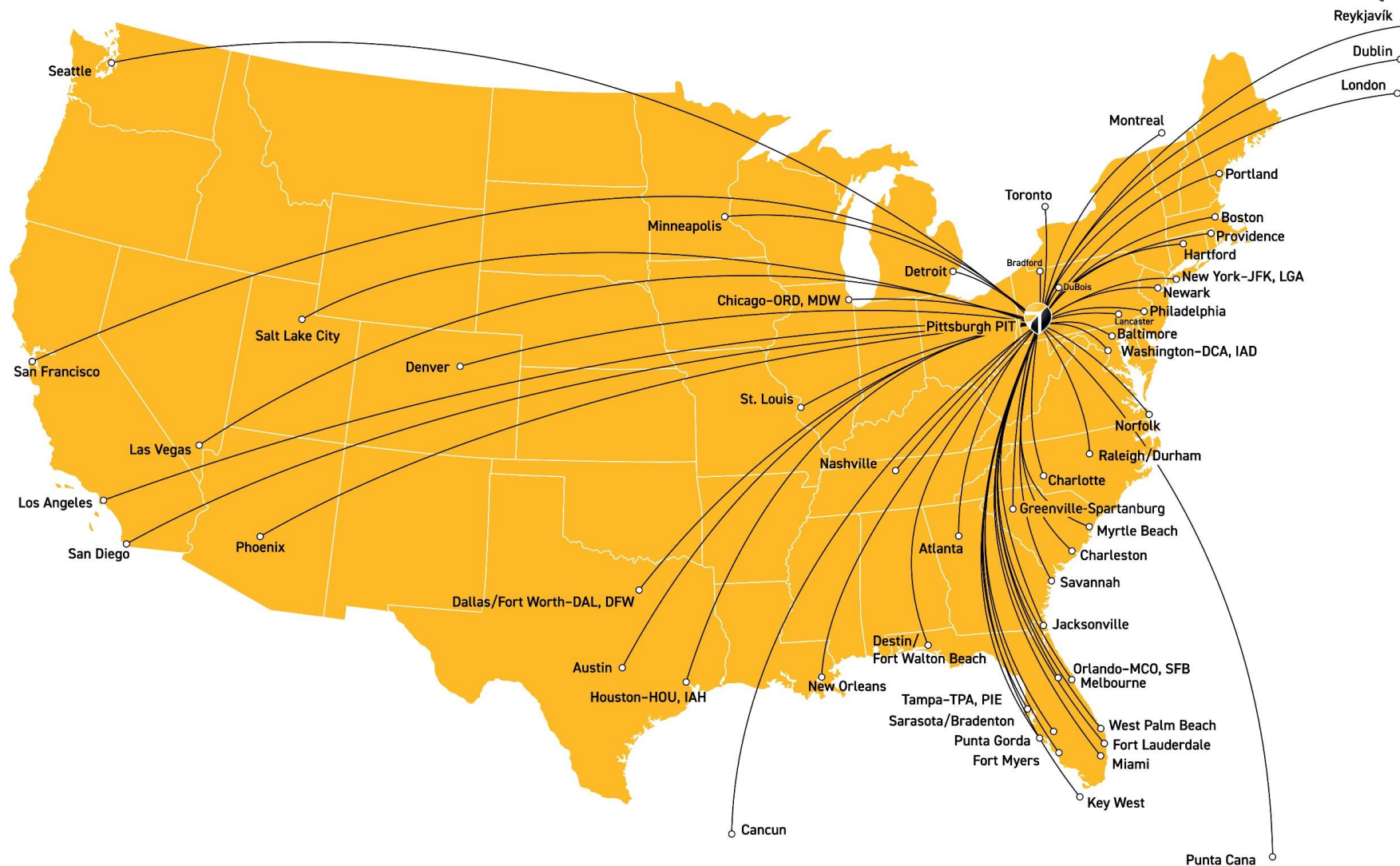


Transforming PIT into a people-centered airport that reflects and serves a redefined Pittsburgh



We have expanded service less than one month after opening the Transformed PIT





Launching a new era of connectivity that mirrors our community's history of innovation



Southwest

jetBlue

 AIR CANADA

American Airlines 

 allegiant

FRONTIER

 sun country
airlines

 DELTA

 Breeze

ICELANDAIR 

UNITED 

Alaska

Aer Lingus 

spirit

BRITISH AIRWAYS 

 SOUTHERN AIRWAYS
EXPRESS

Bringing the world to Pittsburgh, and sharing all that is Pittsburgh with the world



A complement to the region's beauty, PIT's terraces will open to passengers in the spring



Our next transformation – the first airport in the world to produce sustainable aviation fuel







Thank You

December 2025



Allegheny County Airport Authority